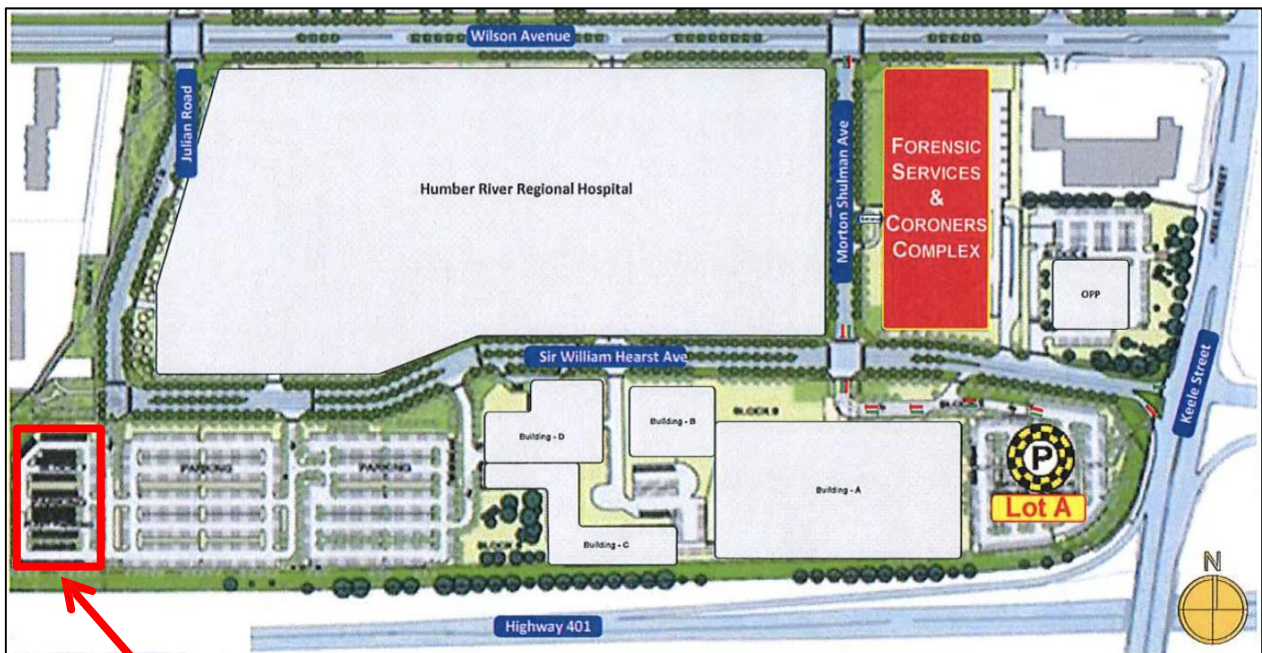


FORENSIC SERVICES AND CORONERS COMPLEX (FSCC) VISITOR PARKING

Location

The Forensic Services and Coroners Complex (FSCC) is part of the Downsview Complex located at the southwest quadrant of the area bounded by Wilson Avenue on the North, Keele Street on the East, the 401 on the South and Julian Road on the West. Main vehicular access to the site is provided by an east/west roadway (Downsview Avenue) from the west side of Keele Street, and two north/south roadways (Julian Road and Morton Shulman Ave.) on the south side of Wilson Avenue. The Forensic Services and Coroners Complex (FSCC) is located on the newly named road Morton Shulman Ave. running north and south from Wilson Avenue to Downsview Avenue. Please see map below for further clarification.

Visitor Parking Lot E



LOT E

Directions

From the 401 Westbound – exit to Keele Street and proceed through the lights onto Downsview Avenue.

From the 401 Eastbound – exit to Keele Street North turning left at the first lights onto Downsview Avenue.

From Wilson Avenue access can be obtained from either Julian Road or Morton Shulman Ave. on the south side of Wilson Avenue west of Keele Street.

Parking Costs

The FSCC visitors utilizing Parking Lot E will be required to pay hourly/daily parking charges as follows:

WHEN	TIME	CHARGES
Monday – Friday - 6:00 a.m. – 6:00 p.m.	Every ½ hour or less	\$3.00
Monday - Friday - 6:00 a.m. – 6:00 p.m.	Daily Maximum	\$15.00
Monday – Sunday - 6:00 p.m. – 6:00 a.m.	Evening Flat Rate	\$6.00
Weekend and Holidays - 6:00 a.m. – 6:00 p.m.	Flat Rate	\$6.00
** NO IN/OUT PRIVILEGES ALLOWED WITH PARKING**		

Public Transit

TTC and Go Transit services are available within 1 block of the complex. Contact information for both is as follows:

TTC – 416-393-3030 or www.ttc.ca

GO Transit is 1-888-438-6646 or www.gotransit.ca

CONTACT INFORMATION

The parking is managed by Unit Park on behalf of IO/CBRE. It is manned 24/7. For assistance at any time please contact the on-site office at 416-248-8698 or www.unitpark.ca .

Other assistance can be provided during normal business hours by contacting:

Salman Hydri, V.P. Operations, Unit Park Management Inc. 416-366-7275 OR

Lena Malone, Facility Manager, CBRE, 416-235-3491 OR

Daniel Kielly, Forensic Services and Coroners Complex contact at 416-550-4732