

**STRONCO**

# EXHIBITOR ORDER FORMS

**FOOT & ANKLE SYMPOSIUM**  
**Metro Toronto Convention Centre**  
**April 1 – 2, 2022**



**PLEASE FAX, MAIL OR EMAIL YOUR ORDER FORM TO:**

1510-B Caterpillar Road, Mississauga ON, L4X 2W9 | T: 905.270.6767 | F: 905.270.6771 | [exhibitorservices@stronco.com](mailto:exhibitorservices@stronco.com)

# General Information

We are pleased to be appointed Official Service Contractor for **FOOT & ANKLE SYMPOSIUM**.

Whatever your exhibiting needs, we have the products and services to give you a professional appearance and increased visibility. The following are some of the products and services we can provide:

- Display Tables & Drapery
- Counters, Storage & Display Units
- Carpet & Underpadding
- Chairs, Stools, Tables, Sofas
- Exhibit Rentals
- Signs & Graphics
- Installation & Dismantling Labour Services
- In-Booth Forklift Services
- Advance Show Warehousing
- Transportation Services
- Customs Brokerage Services

The following order forms contain some of the more commonly ordered products and services you may need for your booth. Visit us at [www.stroncoonline.com](http://www.stroncoonline.com) for more options.

## PLACING YOUR ORDER

1. Place your order online by visiting [www.stroncoonline.com](http://www.stroncoonline.com)

The show code for this event is: **513614866**

2. Email your order to: [exhibitorservices@stronco.com](mailto:exhibitorservices@stronco.com)
3. Fax your order to: 905-270-6771
4. Mail your order to: Stronco  
1510-B Caterpillar Rd.  
Mississauga, ON L4X 2W9

## STRONCO EXHIBITOR SERVICES CENTRE

Leading up to the show we will periodically touch base with you to make sure all your exhibiting needs are taken care of. Our team is here to make your exhibiting experience as easy and seamless as possible.

Our Exhibitor Services team is available Mon-Fri from 8:30 am – 5:00 pm at 800-665-2621 or via email at [exhibitorservices@stronco.com](mailto:exhibitorservices@stronco.com).

We hope you have a successful show and look forward to working with you.

Stronco Exhibitor Services

# Payment Policy Information Sheet

## **DISCOUNT PRICE DEADLINE DATE**

To take advantage of discounted pre-show pricing listed on the order forms, we must receive your order and payment by the deadline date specified on the order form.

Orders without payment cannot be processed until payment is received and will be charged the after deadline date prices.

## **METHOD OF PAYMENT**

**All orders must be paid in full prior to delivery.**

You must complete a **CREDIT CARD AUTHORIZATION FORM** if you are paying by cheque, or ordering any of the following services:

- Material Handling
- Advance Show Receiving
- Installation & Dismantle Labour Services
- In-Booth Forklift Service
- Transportation Services
- Customs Brokerage Services
- Plan to have your representative order services on-site

Payment can be made by Visa, MasterCard, American Express, Cheque or Bank Wire Transfers.

We do not accept cheques on-site.

## **THIRD PARTY BILLING**

If you would like to arrange for an exhibit house or other agent to manage and order services on your behalf, they may make payment arrangements with us. The exhibiting company is ultimately responsible for all charges incurred on their behalf if payment is not made by the third party.

## **CANCELLATION POLICY**

A 70% refund will be allowed on all written cancellations received 7 days prior to show set-up, excluding display rentals and signage.

No refunds will be given on signage and graphics once they are produced.

All claims and discrepancies must be settled prior to show closing. No adjustments or refunds will be given for items cancelled after the stated cancellation period.

# Credit Card Authorization

SHOW	FOOT & ANKLE SYMPOSIUM	<b>DEADLINE DATE</b>	March 9, 2022
LOCATION	Metro Toronto Convention Centre	SHOW DATES	April 1 – 2, 2022

## COMPANY INFORMATION

COMPANY					<b>BOOTH #</b>	
ADDRESS						
CITY		PROV / STATE		POSTAL / ZIP		
CONTACT		TITLE		EMAIL		
TEL		EXT		FAX		

## IMPORTANT

### This form must be filled out if:

1. You are paying by cheque
2. Your representative will be placing any orders onsite
3. You are ordering Material Handling, Advance Receiving, Installation & Dismantle Labour, In-Booth Forklift Services, Transportation Services or Customs Brokerage Services

## CREDIT CARD INFORMATION

I understand that Stronco will use this authorization to charge any outstanding fees upon show closing to the credit card listed below. These include funds related to any unpaid or outstanding balance due to STRONCO, an NSF cheque, show site orders placed by your representative, material handling and advance shipment overages, installation and dismantle labour charge adjustments and transportation and customs brokerage service adjustments.

VISA     MC     AMEX                   CORPORATE CARD     PERSONAL CARD

\_\_\_\_\_

CARD NUMBER

EXPIRY DATE

CARDHOLDER \_\_\_\_\_

SIGNATURE \_\_\_\_\_ DATE \_\_\_\_\_

BILLING  
ADDRESS \_\_\_\_\_  
(If different from above)

EMAIL \_\_\_\_\_ TEL \_\_\_\_\_ FAX \_\_\_\_\_

**Cheques will not be accepted without this authorization.**  
If this form is not completed, onsite orders must be paid in full prior to delivery.

J51361  
06-02-09  
Rev 01-04-11

# Advance Show Receiving Information Sheet

## IMPORTANT – PLEASE READ CAREFULLY

### BENEFITS OF ADVANCE SHIPPING:

- Storage of materials for up to 30 days prior to show
- Priority delivery of shipment to your booth prior to start of exhibitor move-in
- Saves you valuable time and additional costs during set-up

### SERVICE INCLUDES:

- Receive shipment at the warehouse up to 30 days in advance of show (any items stored beyond 30 days will incur additional charges)
- Provide inventory count and record any visual damage
- Deliver materials to show site
- Unloading of shipment and delivery to booth
- Removing of empty containers from booth to designated storage area (may be off-site)
- Return of empty containers to booth after show closing
- Loading of shipment from booth to carrier of choice

### ESTIMATING CHARGES:

- Charges are based on weight of shipment and are charged per hundred weight (CWT) and rounded up to the nearest hundred. Minimum per shipment may apply. See enclosed Advance Show Receiving Order Form.
- All shipments must be accompanied with a Certified Weight Ticket. Unless crated and uncrated shipments are separated and clearly identified on individual bills of lading with separate weight tickets, Stronco will charge the entire shipment at the uncrated rate. Charges are estimates only and will be adjusted according to weight tickets.
- A \$50 surcharge will apply if shipment has to be weighed.
- Off target shipments will be charged an additional 30% to the applicable CWT rate.
- A surcharge will apply if advance freight is received after the published deadline date for shipments to arrive in the warehouse.
- A surcharge may apply if shipments are received with incomplete information.

### NOTE:

- All shipments must be properly labeled including booth number. Labels must be on each item shipped.
- To avoid additional charges, ensure all shipments are in crates or on skids.
- Collect shipments will not be accepted by the warehouse.
- **Shipments are accepted in the warehouse Monday to Friday between 8:00 a.m. and 4:00 p.m.**

### SHIPMENT DEFINITIONS

CRATED/SKIDDED	Skidded materials or materials in a shipping container that can be unloaded at loading dock with no additional handling.
UNCRATED	Loose or pad-wrapped shipments; machinery without proper lifting bars or hooks.
SPECIAL HANDLING	Material that requires additional handling, including ground unloading, stacked or constricted space unloading, designated piece loading, alternate delivery location, loads mixed with pad wrapped material and shipments without proper delivery receipts.
SMALL PACKAGE	Shipment consisting of any number of pieces not exceeding a combined weight of 30 lbs, and is received collectively on the same day, from the same shipper and delivered by the same carrier.

### SHIPMENT WEIGHTS

If no weight ticket is provided, Stronco's weight estimates are final and binding when shipment is received in the warehouse. Shipments may be calculated by Stronco using cubic weight (dimensional weight) or actual shipment weight (pounds) for billing purposes.

### INSURANCE

Shipments should be adequately insured by the exhibitor for coverage when out of care, custody and control of Stronco.

### LIABILITY

Stronco will not be held responsible for concealed damage upon delivery to advance warehouse, or damage or loss of merchandise after delivery to booth, before or during installation time, or at conclusion of show prior to delivery to common carrier. Stronco will not be responsible for damages while handling loose or inadequately packed exhibit materials. The condition, count, and contents of the materials at the time of removal will be final and binding. Stronco reserves the right to alter the exhibitor's bill of lading to reflect the actual condition, count, and contents at the time of removal. Stronco will not be responsible for failure or delay in performing service when delay is caused by strike, labour stoppage or any other cause unavoidable or beyond Stronco's control. Stronco's liability is limited to \$0.30 per pound per article, to a maximum of \$30.00 per article and \$150 per shipment. Values exceeding this limitation should be insured by the shipper.

**ALL ORDERS MUST BE ACCOMPANIED WITH AN ADVANCE RECEIVING ORDER FORM AND PAYMENT.**

# Advance Show Receiving Order Form

<b>Shipments are accepted from</b>	<b>March 2, 2022</b>
<b>No shipments will be accepted in our advance warehouse on or after</b>	<b>March 28, 2022</b>

<b>SHOW</b>	<b>FOOT &amp; ANKLE SYMPOSIUM</b>			<b>DEADLINE DATE</b>	<b>March 18, 2022</b>
<b>LOCATION</b>	Metro Toronto Convention Centre			<b>SHOW DATES</b>	April 1 – 2, 2022
<b>COMPANY</b>				<b>BOOTH #</b>	
<b>ADDRESS</b>					
<b>CITY</b>		<b>PROV / STATE</b>		<b>POSTAL / ZIP</b>	
<b>CONTACT</b>		<b>TITLE</b>		<b>EMAIL</b>	
<b>TEL</b>		<b>EXT</b>		<b>FAX</b>	

**\*\*CREDIT CARD AUTHORIZATION FORM MUST BE SUBMITTED WITH THIS SERVICE\*\***

<b>RATES</b>								
Shipments are accepted in the warehouse Monday to Friday between 8:00 a.m. and 4:00 p.m.			SHIPMENTS RECEIVED ON OR BEFORE DEADLINE DATE			SHIPMENTS RECEIVED AFTER DEADLINE DATE		
TIME			PRICE PER CWT					
Note: Rates are based on show move-in/move-out times. If your move-in or move-out time fall during overtime hours, overtime rate will apply.			CRATED	UNCRATED	SPECIAL HANDLING	CRATED	UNCRATED	SPECIAL HANDLING
REGULAR TIME	Mon - Fri	8:00 am – 4:00 pm	<b>\$87.00</b>	<b>\$115.00</b>	<b>\$127.00</b>	<b>\$103.50</b>	<b>\$131.50</b>	<b>\$143.50</b>
OVERTIME	Mon – Fri Sat – Sun Holidays	Before 8:00 am or after 4:00 pm All day All day	<b>\$102.00</b>	<b>\$130.00</b>	<b>\$152.00</b>	<b>\$118.50</b>	<b>\$146.50</b>	<b>\$168.50</b>
<b>MINIMUM CHARGE</b>		The minimum charge applies to each shipment and is not cumulative on multiple shipments.						<b>\$ 283.00</b>
<b>ON-SITE ORDERS</b>		A 25% surcharge will be applied to on-site orders.						
<b>OFF-TARGET SHIPMENTS</b>		A 30% surcharge will be applied to off-target shipments.						

CALCULATION (when recording weight, round up to the nearest 100 lbs or minimum, whichever is greater)				
DESCRIPTION <small>(see advance show receiving information sheet for definitions of shipments)</small>	WEIGHT (LBS)	CWT	RATE <small>(see applicable rates above)</small>	ESTIMATED TOTAL <small>(Final total will be adjusted according to shipment weight)</small>
CRATED/SKIDDED SHIPMENT	_____ ÷ 100 = _____	_____	x \$ _____ = _____	_____
UNCRATED SHIPMENT	_____ ÷ 100 = _____	_____	x \$ _____ = _____	_____
SPECIAL HANDLING SHIPMENTS	_____ ÷ 100 = _____	_____	x \$ _____ = _____	_____

Note: Unless crated and uncrated shipments are separated and clearly identified on individual bills of lading with separate weight tickets, Stronco will charge the entire shipment at the uncrated rate. Charges above are estimates only and will be adjusted according to weight tickets. A \$50 surcharge will apply if shipment has to be weighed. Off target shipments will be charged an additional 30% to the applicable CWT rate.

PAYMENT		
Note: You must complete a credit card authorization form if you are paying by cheque		<b>SUB TOTAL</b>
<input type="checkbox"/> VISA <input type="checkbox"/> MC <input type="checkbox"/> AMEX <input type="checkbox"/> CHQ		<b>13% HST</b>
_____		<b>TOTAL</b>
CARD NUMBER	EXPIRY DATE	
I have read and understand the Terms & Conditions of my agreement with Stronco		HST# R129612164
CARD HOLDER	SIGNATURE	DATE

<b>TERMS &amp; CONDITIONS</b> This order is placed with the specific understanding that we hereby release STRONCO DESIGNS INC, its employees and/or agents from all liability for loss, theft and/or damage of or to our merchandise and property, no matter how caused, and that we have insured all such properties being handled. This charge is only for duration of show, any shipments brought back to our warehouse will be subject to charges.	<ul style="list-style-type: none"> <li>Refunds will not be given on orders cancelled on-site.</li> <li>A 70% refund will be allowed on all written cancellations received 7 days prior to set-up, excluding display rentals and signage.</li> <li>All claims/discrepancies must be settled prior to show closing.</li> <li>No cheques will be accepted on-site.</li> </ul>
---	--

J51361  
CWT-07-23-19+17-50-T3+05



**SHIPPING LABELS - TO ADVANCE WAREHOUSE**

**A**

**ADVANCE  
WAREHOUSE  
EXHIBITION FREIGHT**

**FROM**

\_\_\_\_\_  
\_\_\_\_\_  
\_\_\_\_\_  
\_\_\_\_\_

**ADVANCED SHIPMENT**

**TO**

EXHIBITING COMPANY \_\_\_\_\_

BOOTH NUMBER \_\_\_\_\_

**FOOT & ANKLE SYMPOSIUM**

SHOW \_\_\_\_\_

c/o **STRONCO LOGISTICS**  
1510B Caterpillar Rd  
Mississauga, ON L4X 2W9

**CERTIFIED WEIGHT TICKETS ARE REQUIRED FOR ALL SHIPMENTS**  
Warehouse receiving hours are Monday – Friday, 8:00 am – 4:00 pm

**CARRIER** \_\_\_\_\_

**NUMBER OF PIECES** \_\_\_\_\_ **OF** \_\_\_\_\_

**SHIPPING LABELS - DIRECT TO SHOW SITE**

**D**

**DIRECT TO  
SHOW SITE  
EXHIBITION FREIGHT**

**FROM**

\_\_\_\_\_  
\_\_\_\_\_  
\_\_\_\_\_  
\_\_\_\_\_

**DIRECT SHIPMENT**

**TO**

EXHIBITING COMPANY \_\_\_\_\_

BOOTH NUMBER \_\_\_\_\_

**FOOT & ANKLE SYMPOSIUM**

SHOW \_\_\_\_\_

**METRO TORONTO CONVENTION CENTRE**  
222 Bremner Blvd  
Toronto, ON M5V 3L9

**CARRIER** \_\_\_\_\_

**NUMBER OF PIECES** \_\_\_\_\_ **OF** \_\_\_\_\_

# Material Handling Information Sheet

## **IMPORTANT – PLEASE READ CAREFULLY.**

Stronco has been appointed as the Official Material Handling Service Provider for this event.

### **MATERIAL HANDLING SERVICE INCLUDES:**

- Unloading of shipment and delivery to booth
- Removing of empty containers from booth to designated storage area (may be off-site)
- Return of empty containers to booth after show closing
- Loading of shipment from booth to carrier of choice

**\* This service includes move-in and move-out, whether fully or partially used**

Note: Transportation to and from show site is not included as part of this service.

### **ESTIMATING MATERIAL HANDLING CHARGES:**

- Material handling services are charged per hundred weight (CWT) and rounded up to the nearest hundred. A minimum charge of 200 lbs per shipment is applicable.
- All shipments must be accompanied with a Certified Weight Ticket. Unless crated and uncrated shipments are separated and clearly identified on individual bills of lading with separate weight tickets, Stronco will charge the entire shipment at the uncrated rate. Charges are estimates only and will be adjusted according to weight tickets.
- A \$50 surcharge will apply if shipment has to be weighed.
- Off target shipments will be charged an additional 30% to the applicable CWT rate.

### **SHIPMENT DEFINITIONS**

CRATED/SKIDDED	Skidded materials or materials in a shipping container that can be unloaded at loading dock with no additional handling.
UNCRATED	Loose or pad-wrapped shipments; machinery without proper lifting bars or hooks.
SPECIAL HANDLING	Material that requires additional handling, including ground unloading, stacked or constricted space unloading, designated piece loading, alternate delivery location, loads mixed with pad wrapped material and shipments without proper delivery receipts.
SMALL PACKAGE	Shipment consisting of any number of pieces not exceeding a combined weight of 30 lbs, and is received collectively on the same day, from the same shipper and delivered by the same carrier.



# Material Handling Order Form

<b>SHOW</b>	FOOT & ANKLE SYMPOSIUM	<b>DEADLINE DATE</b>	March 9, 2022
<b>LOCATION</b>	Metro Toronto Convention Centre	<b>SHOW DATES</b>	April 1 – 2, 2022

<b>COMPANY</b>	<b>BOOTH #</b>		
<b>ADDRESS</b>			
<b>CITY</b>	<b>PROV / STATE</b>		<b>POSTAL / ZIP</b>
<b>CONTACT</b>	<b>TITLE</b>		<b>EMAIL</b>
<b>TEL</b>	<b>EXT</b>		<b>FAX</b>

**\*\*CREDIT CARD AUTHORIZATION FORM MUST BE SUBMITTED WITH THIS SERVICE\*\***

RATES					
TIME			PRICE PER CWT (200 lb minimum)		
			CRATED	UNCRATED	SPECIAL HANDLING
REGULAR TIME	Mon - Fri	8:00 am – 4:00 pm	\$64.00	\$79.00	\$90.00
OVERTIME	Mon – Fri Sat – Sun Holidays	Before 8:00 am or after 4:00 pm All day All day	\$79.00	\$94.00	\$109.00
ON-SITE ORDERS	A 25% surcharge will be applied to on-site orders.				
OFF-TARGET SHIPMENTS	A 30% surcharge will be applied to off-target shipments.				
<b>NOTE: If your move-in or move-out fall during overtime hours, overtime rate will be applied.</b>					

## CALCULATION (when recording weight, round up to the nearest 100 lbs or minimum (200 lbs), whichever is greater)

DESCRIPTION <small>(see material handling information sheet for definitions of shipments)</small>	WEIGHT (LBS) <small>(200 lbs minimum)</small>		CWT		RATE <small>(see applicable rates above)</small>		ESTIMATED TOTAL <small>(Final total will be adjusted according to shipment weight)</small>
CRATED/SKIDDED SHIPMENT	_____	÷ 100 =	_____	x	\$ _____	=	_____
UNCRATED SHIPMENT	_____	÷ 100 =	_____	x	\$ _____	=	_____
SPECIAL HANDLING SHIPMENTS	_____	÷ 100 =	_____	x	\$ _____	=	_____

Note: Unless crated and uncrated shipments are separated and clearly identified on individual bills of lading with separate weight tickets, Stronco will charge the entire shipment at the uncrated rate. Charges above are estimates only and will be adjusted according to weight tickets. A \$50 surcharge will apply if shipment has to be weighed. Off target shipments will be charged an additional 30% to the applicable CWT rate.

	WEIGHT (LBS)	QTY	RATE <small>(per shipment)</small>	TOTAL
SMALL PACKAGE (not to exceed 30 lbs)			<b>\$78.00</b>	

## PAYMENT

Note: You must complete a credit card authorization form if you are paying by cheque

VISA    MC    AMEX    CHQ

--	--

<b>SUB TOTAL</b>	
<b>13% HST</b>	
<b>TOTAL</b>	

CARD NUMBER

EXPIRY DATE

I have read and understand the Terms & Conditions of my agreement with Stronco

HST# R129612164

CARD HOLDER \_\_\_\_\_ SIGNATURE \_\_\_\_\_ DATE \_\_\_\_\_

### TERMS & CONDITIONS

This order is placed with the specific understanding that we hereby release STRONCO DESIGNS INC, its employees and/or agents from all liability for loss, theft and/or damage of or to our merchandise and property, no matter how caused, and that we have insured all such properties being handled. This charge is only for duration of show, any shipments brought back to our warehouse will be subject to charges.

- Refunds will not be given on orders cancelled on-site.
- A 70% refund will be allowed on all written cancellations received 7 days prior to set-up, excluding display rentals and signage.
- All claims/discrepancies must be settled prior to show closing.
- No cheques will be accepted on-site.

J51361  
CWT-07-23-19+17-50-T3+05



# Labour Service Form

<b>SHOW</b>	FOOT & ANKLE SYMPOSIUM	<b>DEADLINE DATE</b>	March 9, 2022
<b>LOCATION</b>	Metro Toronto Convention Centre	<b>SHOW DATES</b>	April 1 – 2, 2022
<b>COMPANY</b>			
<b>ADDRESS</b>			
<b>CITY</b>	<b>PROV / STATE</b>	<b>POSTAL/ ZIP</b>	
<b>CONTACT</b>	<b>TITLE</b>	<b>EMAIL</b>	
<b>TEL</b>	<b>EXT</b>	<b>FAX</b>	

**\*\*CREDIT CARD AUTHORIZATION MUST BE SUBMITTED WITH THIS SERVICE\*\***

- Labour rates are charged per labourer per hour in half hour increments.
- A minimum charge of one hour per labourer is applicable.
- If Stronco supervision is required, add 25% to the total labour cost.
- A 25% surcharge is applicable on onsite orders.

RATES			
<b>REGULAR TIME</b>	Mon - Fri	8:00 a.m. – 4:00 p.m.	\$124.00 / hour / man
<b>OVERTIME</b>	Mon – Fri	4:00 p.m. – 6:00 p.m.	\$186.00 / hour / man
	Sat – Sun	8:00 a.m. – 4:00 p.m.	
<b>DOUBLE TIME</b>	Mon – Fri	After 6:00 p.m.	\$242.00 / hour/ man
	Sat – Sun	After 4:00 p.m.	
	All Holidays		

**INSTALLATION LABOUR \*\*\*Exhibitor must report to Stronco Service Desk to receive labour\*\*\***

Date Required \_\_\_\_\_ Start Time Required \_\_\_\_\_  A.M.  P.M.

\_\_\_\_\_ x \_\_\_\_\_ = \_\_\_\_\_ x \_\_\_\_\_ = \$ \_\_\_\_\_

No of People Required      Hours Per Person      Total Hours      Rate      **Total**

**SUPERVISION (Note: If Exhibitor is supervising labour, the Exhibitor must check labour in and out at the Stronco Service Desk.)**

Exhibitor Supervised      Exhibitor Contact Name \_\_\_\_\_       Stronco Supervised      \$ \_\_\_\_\_

\*Exhibitor must be present to supervise      \*Exhibitor does not need to be present      Add 25%

**DELIVERY INFORMATION**

Carrier \_\_\_\_\_ Delivery Date \_\_\_\_\_ Delivery Time \_\_\_\_\_  A.M.  P.M.

**EXHIBIT INFORMATION**

Set up drawings/photos required:  YES  NO      Set up drawings/photos attached:  YES  NO

**DISMANTLE LABOUR \*\*\*Exhibitor must report to Stronco Service Desk to receive labour\*\*\***

Date Required \_\_\_\_\_ Start Time Required \_\_\_\_\_  A.M.  P.M.

\_\_\_\_\_ x \_\_\_\_\_ = \_\_\_\_\_ x \_\_\_\_\_ = \$ \_\_\_\_\_

No of People Required      Hours Per Person      Total Hours      Rate      **Total**

**SUPERVISION (Note: If Exhibitor is supervising labour, the Exhibitor must check labour in and out at the Stronco Service Desk.)**

Exhibitor Supervised      Contact Name \_\_\_\_\_       Stronco Supervised      \$ \_\_\_\_\_

\*Exhibitor must be present to supervise      \*Exhibitor does not need to be present      Add 25%

**PICK-UP INFORMATION**

Carrier \_\_\_\_\_ Pick-up Date \_\_\_\_\_ Pick-up Time \_\_\_\_\_  A.M.  P.M.

**PAYMENT**

Note: You must complete a credit card authorization form if you are paying by cheque.

VISA     MC     AMEX     CHQ

	<b>SUB TOTAL</b>
	<b>13% HST</b>
	<b>TOTAL</b>

CARD NUMBER \_\_\_\_\_ EXPIRY DATE \_\_\_\_\_

I have read and understand the Terms & Conditions of my agreement with Stronco. HST# R129612164

CARD HOLDER \_\_\_\_\_ SIGNATURE \_\_\_\_\_ DATE \_\_\_\_\_

**TERMS & CONDITIONS**  
 This order is placed with the specific understanding that we hereby release STRONCO DESIGNS INC, its employees and/or agents from all liability for loss, theft and/or damage of or to our merchandise and property, no matter how caused, and that we have insured all such properties being handled. This charge is only for duration of show, any shipments brought back to our warehouse will be subject to charges.

- No cheques will be accepted on-site.
- If exhibitor is supervising labour, the Exhibitor must check labour in and out at the Stronco service desk.
- Stronco reserves the right to change Labourers and/or rates as shifts change.
- All claims/discrepancies must be settled within one week of show closing.
- Uncancelled labour will be charged a minimum fee of 1 hour per labourer.
- Actual totals and amounts will be adjusted according to final hours.



# In-Booth Forklift Order Form

<b>SHOW</b>	<b>FOOT &amp; ANKLE SYMPOSIUM</b>	<b>DEADLINE DATE</b>	March 9, 2022
<b>LOCATION</b>	Metro Toronto Convention Centre	<b>SHOW DATES</b>	April 1 – 2, 2022

<b>COMPANY</b>				<b>BOOTH #</b>				
<b>ADDRESS</b>								
<b>CITY</b>				<b>PROV / STATE</b>			<b>POSTAL/ ZIP</b>	
<b>CONTACT</b>				<b>TITLE</b>			<b>EMAIL</b>	
<b>TEL</b>				<b>EXT</b>			<b>FAX</b>	

**\*\*CREDIT CARD AUTHORIZATION FORM MUST BE SUBMITTED WITH THIS SERVICE\*\***

- **In-booth forklift service is available to assist exhibitors with handling of exhibitor materials within the exhibitor’s booth space.** This service does not include movement of goods from loading dock to booth or to and from storage area. If you require assistance moving goods outside of booth area, please complete a material handling order form.
- Rates include forklift and driver.
- Minimum charge of one hour per order

REGULAR TIME	Mon - Fri	8:00 a.m. – 4:00 p.m.	\$249.00 / hour
OVERTIME	Mon – Fri Sat – Sun	4:00 p.m. – 6:00 p.m. 8:00 a.m. – 4:00 p.m.	\$309.00 / hour
DOUBLE TIME	Mon – Fri Sat – Sun All Holidays	After 6:00 p.m. After 4:00 p.m.	\$365.00 / hour
ON-SITE ORDERS	A 25% SURCHARGE WILL BE APPLIED TO ALL ON-SITE ORDERS.		

**Please Complete the Following Section:**

Goods are scheduled to arrive:                    

DAY                      MONTH                      YEAR

Trucking Company: \_\_\_\_\_

Number of Pieces \_\_\_\_\_ Total Weight \_\_\_\_\_  
(specify lbs or kg)

**Move- In**      Start: \_\_\_\_\_ Finish: \_\_\_\_\_

**Move-Out**      Start: \_\_\_\_\_ Finish: \_\_\_\_\_

\_\_\_\_\_ x \$ \_\_\_\_\_ = \$ \_\_\_\_\_

Total Hours                      Rate                      Sub Total

**PAYMENT**

Note: You must complete a credit card authorization form if you are paying by cheque

VISA     MC     AMEX     CHQ

<span style="border: 1px solid black; padding: 0 5px;">  </span> <span style="border: 1px solid black; padding: 0 5px;">  </span> <span style="border: 1px solid black; padding: 0 5px;">  </span> <span style="border: 1px solid black; padding: 0 5px;">  </span> <span style="border: 1px solid black; padding: 0 5px;">  </span> <span style="border: 1px solid black; padding: 0 5px;">  </span> <span style="border: 1px solid black; padding: 0 5px;">  </span> <span style="border: 1px solid black; padding: 0 5px;">  </span> <span style="border: 1px solid black; padding: 0 5px;">  </span> <span style="border: 1px solid black; padding: 0 5px;">  </span> <span style="border: 1px solid black; padding: 0 5px;">  </span> <span style="border: 1px solid black; padding: 0 5px;">  </span> <span style="border: 1px solid black; padding: 0 5px;">  </span> <span style="border: 1px solid black; padding: 0 5px;">  </span> <span style="border: 1px solid black; padding: 0 5px;">  </span> <span style="border: 1px solid black; padding: 0 5px;">  </span> <span style="border: 1px solid black; padding: 0 5px;">  </span> <span style="border: 1px solid black; padding: 0 5px;">  </span> <span style="border: 1px solid black; padding: 0 5px;">  </span> <span style="border: 1px solid black; padding: 0 5px;">  </span>	<span style="border: 1px solid black; padding: 0 5px;">  </span> <span style="border: 1px solid black; padding: 0 5px;">  </span> <span style="border: 1px solid black; padding: 0 5px;">  </span>	<span style="border: 1px solid black; padding: 0 5px;">  </span> <span style="border: 1px solid black; padding: 0 5px;">  </span> <span style="border: 1px solid black; padding: 0 5px;">  </span>	<span style="border: 1px solid black; padding: 0 5px;">  </span> <span style="border: 1px solid black; padding: 0 5px;">  </span>
CARD NUMBER		EXPIRY DATE	

I have read and understand the Terms & Conditions of my agreement with Stronco HST# R129612164

CARD HOLDER \_\_\_\_\_ SIGNATURE \_\_\_\_\_ DATE \_\_\_\_\_

<p><b>TERMS &amp; CONDITIONS</b></p> <p><small>This order is placed with the specific understanding that we hereby release STRONCO DESIGNS INC, its employees and/or agents from all liability for loss, theft and/or damage of or to our merchandise and property, no matter how caused, and that we have insured all such properties being handled. This charge is only for duration of show, any shipments brought back to our warehouse will be subject to charges.</small></p>	<ul style="list-style-type: none"> <li>• Refunds will not be given on orders cancelled on-site.</li> <li>• A 70% refund will be allowed on all written cancellations received 7 days prior to set-up, excluding display rentals and signage.</li> <li>• All claims/discrepancies must be settled prior to show closing.</li> <li>• No cheques will be accepted on-site.</li> </ul>
---	--

J51361  
07-12-19+17-50-T3+05



# MX Show Special Order Form

<b>SHOW</b>	<b>FOOT &amp; ANKLE SYMPOSIUM</b>	<b>DEADLINE DATE</b>	<b>March 9, 2022</b>
<b>LOCATION</b>	Metro Toronto Convention Centre	<b>SHOW DATES</b>	April 1 – 2, 2022
<b>COMPANY</b>	<b>BOOTH #</b>		
<b>ADDRESS</b>			
<b>CITY</b>	<b>PROV / STATE</b>	<b>POSTAL/ ZIP</b>	
<b>CONTACT</b>	<b>TITLE</b>	<b>EMAIL</b>	
<b>TEL</b>	<b>EXT</b>	<b>FAX</b>	

## MX1010 – 10'x10'



- Attractive brushed aluminum structure with your choice of panel colour
- 3 - shelves
- 10' x 10' carpet
- 2 – side chairs
- Pedestal table
- Company ID sign (logo extra)
- Custom graphic option

## MX1020 – 10'x20'



- Attractive brushed aluminum structure with your choice of panel colour
- 6 - shelves
- 10' x 20' carpet
- 2 – side chairs
- Pedestal table
- Company ID sign (logo extra)
- Custom graphic option

**\*All packages include delivery, installation and dismantling.**

ITEM #	QTY	DESCRIPTION	PRE-SHOW	AFTER DEADLINE	TOTAL
P-0004		MX1010 - 10' x 10' –Brushed Aluminum Structure	\$1,474.00	\$2,211.00	
P-0007		MX1010 - 10' x 10' - Black Aluminum Structure	\$1,740.00	\$2,610.00	
P-0005		MX1020 - 10' x 20'–Brushed Aluminum Structure	\$2,216.00	\$3,324.00	
P-0006		MX1020 - 10' x 20' - Black Aluminum Structure	\$2,480.00	\$3,720.00	
80-05-002		Add company logo to ID Sign	\$103.00	\$155.00	
80-07-002		Add graphic panel (full height panel)	\$431.00	\$647.00	
80-07-003		Add graphic panel (side wall – low rail panel)	\$223.00	\$335.00	

\* Graphic prices are based on print ready files. A Stronco representative will contact you with file submission details.

\* Design services can be quoted if required.

Identification sign to read:

Choose Vinyl Colour for Sign: \_\_\_\_\_ Choose Panel Colour:  Blue  Grey  White  Black

Choose Carpet Colour:  Blue  Grey  Red  Green  Burgundy  Black  Purple  Gold  Teal

### PAYMENT \*\*\*Pre-show prices are only applicable if payment is received prior to deadline date\*\*\*

Note: You must complete a credit card authorization form if you are paying by cheque

VISA  MC  AMEX  CHQ

**SUB TOTAL**

**13% HST**

**TOTAL**

CARD NUMBER

EXPIRY DATE

I have read and understand the Terms & Conditions of my agreement with Stronco

HST# R129612164

CARD HOLDER \_\_\_\_\_

SIGNATURE \_\_\_\_\_

DATE \_\_\_\_\_

#### TERMS & CONDITIONS

- All orders must be paid in full 7 days prior to show set-up.
- All prices are for the duration of the show, unless otherwise stated.
- No cheques will be accepted on-site.
- All orders received after the deadline date will be processed at the stated "After Deadline Date" price and are subject to availability. **Pre-show prices are only applicable if payment is received prior to deadline date.**
- If no Deadline Date is specified, orders must be received 14 days before show set-up to receive Pre-Show Pricing.

- Refunds will not be given on orders cancelled on-site.
- A 70% refund will be allowed on all written cancellations received 7 days prior to set-up, excluding display rentals and signage.
- All claims/discrepancies must be settled prior to show closing.
- If no colour is indicated, Stronco will make the selection on your behalf.
- Stronco will not be responsible for any materials or products left in exhibits, counters, storage units or showcases.

# Exhibit Packages

## Model #1 (10' x 10')



- Choice of Wall Panel Colour
- Company ID Sign
- Carpet

## Model #2 (10' x 10')



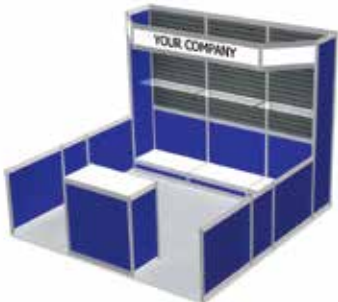
- Choice of Wall Panel Colour
- 3 Shelves
- Company ID Sign
- 1 Lockable Storage Counter, 41" High
- Carpet

## Model #3 (10' x 10')



- Choice of Wall Panel Colour
- 3 Shelves
- Company ID Sign
- 1 Lockable Storage Counter, 41" High
- Carpet

## Model #4 (10' x 10')



- Choice of Wall Panel Colour
- 3 Slatwall Upper Panels
- 3 Clear Acrylic Shelves
- Company ID Sign
- 1 Lockable Storage Counter, 41" High
- Carpet

## Model #5 (10' x 20')



- Choice of Wall Panel Colour
- 6 Shelves
- 2 Company ID Signs
- 2 Lockable Storage Counters, 41" High
- Carpet

## Model #6 (10' x 20')



- Choice of Wall Panel Colour
- 6 Slatwall Upper Panels
- 6 Clear Acrylic Shelves
- 2 Company ID Signs
- 2 Lockable Storage Counters, 41" High
- Carpet

## Model #7 (10' x 20')



- Choice of Wall Panel Colour
- 1 Company ID Sign
- 2 Built-in Counters with Storage
- 2 Lockable Storage Counters, 41" High
- Carpet

## Model #8 (10' x 20')



- Choice of Wall Panel Colour
- 2 Company ID Signs
- 4 Slatwall Panels
- Lockable Storage
- 2 Glass Tower Displays
- Carpet

## Panel Colours

COLOURS AVAILABLE: See order forms for details



WHITE HARDWALL

GREY FABRIC

BLUE FABRIC

## Slatwall Colours Models #4, 6, 8

COLOURS AVAILABLE: See order forms for details



WHITE

GREY

BLACK

All exhibit packages include rental, delivery, installation, and dismantling. Electrical & lighting requirements not included.

09-17

T: 905.270.6767 | F: 905.270.6771 | exhibitorservices@stronco.com | www.stronco.com

**STRONCO**

# Exhibit Packages Order Form

<b>SHOW</b>	FOOT & ANKLE SYMPOSIUM	<b>DEADLINE DATE</b>	March 9, 2022
<b>LOCATION</b>	Metro Toronto Convention Centre	<b>SHOW DATES</b>	April 1 – 2, 2022

<b>COMPANY</b>	<b>BOOTH #</b>
<b>ADDRESS</b>	
<b>CITY</b>	<b>PROV / STATE</b>
<b>CONTACT</b>	<b>POSTAL / ZIP</b>
<b>TEL</b>	<b>EMAIL</b>
	<b>FAX</b>

### ALL PACKAGES INCLUDE:

Installation & Dismantling • Choice of Panel Colour • Choice of Carpet Colour • Company Identification Sign

### EXHIBIT PACKAGES (Electrical & lighting requirements not included)

ITEM #	QTY	DESCRIPTION	PRE-SHOW	AFTER DEADLINE	TOTAL
P-0010		Model #1 – 10'x10'	\$ 1,031.00	\$ 1,547.00	\$
P-0011		Model #2 – 10'x10'	\$ 1,770.00	\$ 2,655.00	\$
P-0012		Model #3 – 10'x10'	\$ 1,770.00	\$ 2,655.00	\$
P-0013		Model #4 – 10'x10'	\$ 2,046.00	\$ 3,069.00	\$
P-0014		Model #5 – 10'x 20'	\$ 2,724.00	\$ 4,086.00	\$
P-0015		Model #6 – 10'x 20'	\$ 3,198.00	\$ 4,797.00	\$
P-0016		Model #7 – 10'x 20'	\$ 3,282.00	\$ 4,923.00	\$
P-0017		Model #8 – 10'x 20'	\$ 4,032.00	\$ 6,048.00	\$

### PLEASE COMPLETE THE FOLLOWING:

<p><b>CARPET COLOUR</b></p> <input type="checkbox"/> Red <input type="checkbox"/> Blue <input type="checkbox"/> Grey
<p><b>PANEL COLOUR</b></p> <input type="checkbox"/> White Hardwall <input type="checkbox"/> Blue Fabric <input type="checkbox"/> Grey Fabric
<p><b>SLATWALL COLOUR (for Models 4, 6 or 8)</b></p> <input type="checkbox"/> Black <input type="checkbox"/> Grey

<p><b>VINYL COLOUR FOR ID SIGN:</b></p> <input type="checkbox"/> Black <input type="checkbox"/> Grey <input type="checkbox"/> Green <input type="checkbox"/> Red <input type="checkbox"/> Blue
<p><b>IDENTIFICATION SIGN TO READ:</b></p>  

### ADD GRAPHICS TO CUSTOMIZE YOUR BOOTH!

ITEM #	QTY	DESCRIPTION	PRE-SHOW	AFTER DEADLINE	TOTAL
80-05-002		Add company logo to ID sign	\$ 103.00	\$ 155.00	\$
80-07-002		Full height graphic panel	\$ 431.00	\$ 647.00	\$
80-07-003		Sidewall low rail panel graphic	\$ 223.00	\$ 335.00	\$
80-10-001		Counter Graphics – Front	\$ 153.00	\$ 230.00	\$
80-10-002		Counter Graphics – Side	\$ 79.00	\$ 119.00	\$

\* Graphic prices are based on print ready files. A Stronco representative will contact you with file submission details.

\* Design services can be quoted if required.

### PAYMENT \*\*\*Pre-show prices are only applicable if payment is received prior to deadline date\*\*\*

<p>Note: You must complete a credit card authorization form if you are paying by cheque</p> <input type="checkbox"/> VISA <input type="checkbox"/> MC <input type="checkbox"/> AMEX <input type="checkbox"/> CHQ		<b>SUB TOTAL</b>	
<p>CARD NUMBER _____ EXPIRY DATE _____</p>		<b>13% HST</b>	
<p>I have read and understand the Terms &amp; Conditions of my agreement with Stronco _____</p>		<b>TOTAL</b>	
<p>CARD HOLDER _____ SIGNATURE _____ DATE _____</p>		HST# R129612164	

<p><b>TERMS &amp; CONDITIONS</b></p> <ul style="list-style-type: none"> <li>• All orders must be paid in full 7 days prior to show set-up.</li> <li>• All prices are for the duration of the show, unless otherwise stated.</li> <li>• No cheques will be accepted on-site.</li> <li>• All orders received after the deadline date will be processed at the stated "After Deadline Date" price and are subject to availability. <b>Pre-show prices are only applicable if payment is received prior to deadline date.</b></li> <li>• If no Deadline Date is specified, orders must be received 14 days before show set-up to receive Pre-Show Pricing.</li> </ul>	<ul style="list-style-type: none"> <li>• Refunds will not be given on orders cancelled on-site.</li> <li>• A 70% refund will be allowed on all written cancellations received 7 days prior to set-up, excluding display rentals and signage.</li> <li>• All claims/discrepancies must be settled prior to show closing.</li> <li>• If no colour is indicated, Stronco will make the selection on your behalf.</li> <li>• Stronco will not be responsible for any materials or products left in exhibits, counters, storage units or showcases.</li> </ul>
---	---

J51361  
07-12-19+17-50-T3+05



# Exhibit Accessories Form

<b>SHOW</b>	<b>FOOT &amp; ANKLE SYMPOSIUM</b>	<b>DEADLINE DATE</b>	<b>March 9, 2022</b>
<b>LOCATION</b>	Metro Toronto Convention Centre	<b>SHOW DATES</b>	April 1 – 2, 2022

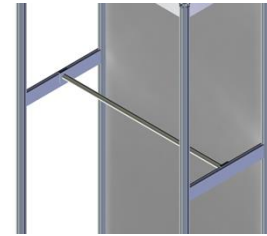
<b>COMPANY</b>				<b>BOOTH #</b>	
<b>ADDRESS</b>					
<b>CITY</b>		<b>PROV / STATE</b>		<b>POSTAL/ ZIP</b>	
<b>CONTACT</b>		<b>TITLE</b>		<b>EMAIL</b>	
<b>TEL</b>		<b>EXT</b>		<b>FAX</b>	



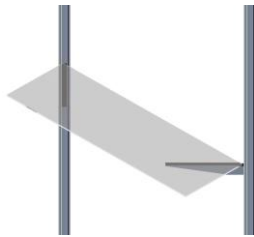
**Alligator Lock**



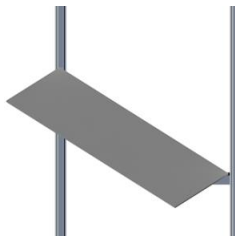
**Waterfall Bracket**



**Garment Rail**



**Glass Shelf**



**Melamine Shelf**



**Acrylic Literature Pocket**

## ACCESSORIES

ITEM #	QTY	DESCRIPTION	PRE-SHOW	AFTER DEADLINE	TOTAL
604		Alligator Lock	\$ 20.00	\$ 30.00	\$
607		Waterfall Bracket	\$ 46.00	\$ 69.00	\$
609		Garment Rail	\$ 52.00	\$ 78.00	\$
605		Glass Shelf	\$ 59.00	\$ 89.00	\$
606		Melamine Shelf	\$ 48.00	\$ 72.00	\$
608		Acrylic Literature Pocket	\$ 38.00	\$ 57.00	\$

## PAYMENT \*\*\*Pre-show prices are only applicable if payment is received prior to deadline date\*\*\*

Note: You must complete a credit card authorization form if you are paying by cheque

VISA  MC  AMEX  CHQ

\_\_\_\_\_

CARD NUMBER

EXPIRY DATE

I have read and understand the Terms & Conditions of my agreement with Stronco

HST# R129612164

CARD HOLDER \_\_\_\_\_ SIGNATURE \_\_\_\_\_ DATE \_\_\_\_\_

### TERMS & CONDITIONS

- All orders must be paid in full 7 days prior to show set-up.
- All prices are for the duration of the show, unless otherwise stated.
- No cheques will be accepted on-site.
- All orders received after the deadline date will be processed at the stated "After Deadline Date" price and are subject to availability. **Pre-show prices are only applicable if payment is received prior to deadline date.**
- If no Deadline Date is specified, orders must be received 14 days before show set-up to receive Pre-Show Pricing.

- Refunds will not be given on orders cancelled on-site.
- A 70% refund will be allowed on all written cancellations received 7 days prior to set-up, excluding display rentals and signage.
- All claims/discrepancies must be settled prior to show closing.
- If no colour is indicated, Stronco will make the selection on your behalf.
- Stronco will not be responsible for any materials or products left in exhibits, counters, storage units or showcases.

<b>SUB TOTAL</b>	
<b>13% HST</b>	
<b>TOTAL</b>	

# Display Tables, Carpet & Drapery

## Draped Display Tables

Draped tables include white vinyl top and pleated skirt on three sides. Fourth side draping can be added. See order form for details.



- 201 4' L x 24" W x 30" H
- 202 6' L x 24" W x 30" H
- 203 8' L x 24" W x 30" H
  
- 208 4' L x 24" W x 42" H
- 209 6' L x 24" W x 42" H
- 210 8' L x 24" W x 42" H

Colours available:



Actual colours may vary slightly.

## Undraped Display Tables

Undraped tables include white vinyl top.



- 205 4' L x 24" W x 30" H
- 206 6' L x 24" W x 30" H
- 207 8' L x 24" W x 30" H
  
- 212 4' L x 24" W x 42" H
- 213 6' L x 24" W x 42" H
- 214 8' L x 24" W x 42" H

## Drapery

We offer 3' high, 8' high and 12' high drape in a variety of colours. See order form for available colours.

### COLOURS AVAILABLE:



Actual colours may vary slightly.

## Carpet

Our carpet is available in a variety of colours and sizes. Prices include delivery, installation and removal. Carpet underpad and visqueen covering are also available as additions. See order form for details.

### COLOURS AVAILABLE:



Actual colours may vary slightly.

*Easily brand your booth and add a carpet decal! Call us to get a Quote.*



# Display Tables & Drapery Order Form

<b>SHOW</b>	FOOT & ANKLE SYMPOSIUM	<b>DEADLINE DATE</b>	March 9, 2022
<b>LOCATION</b>	Metro Toronto Convention Centre	<b>SHOW DATES</b>	April 1 – 2, 2022

<b>COMPANY</b>	<b>BOOTH #</b>
<b>ADDRESS</b>	
<b>CITY</b>	<b>PROV / STATE</b>
<b>CONTACT</b>	<b>POSTAL/ ZIP</b>
<b>TEL</b>	<b>EMAIL</b>
	<b>EXT</b>
	<b>FAX</b>

DRAPED TABLES – 30” HIGH <small>Draped tables include white vinyl top and pleated skirt on three sides. Fourth side can be draped as an addition.</small>					
ITEM #	QTY	DESCRIPTION	PRE-SHOW	AFTER DEADLINE	TOTAL
201		4'L x 24"W x30"H	\$ 93.00	\$ 140.00	\$
202		6'L x 24"W x30"H	\$ 116.00	\$ 174.00	\$
203		8'L x 24"W x30"H	\$ 138.00	\$ 207.00	\$
204		4 <sup>th</sup> Side Draped	\$ 47.00	\$ 71.00	\$
<input type="checkbox"/> RED <input type="checkbox"/> BLUE <input type="checkbox"/> GOLD <input type="checkbox"/> WHITE <input type="checkbox"/> BLACK <input type="checkbox"/> TEAL <input type="checkbox"/> GREEN <input type="checkbox"/> PURPLE <input type="checkbox"/> BURGUNDY <b>Select Colour</b> <input type="checkbox"/> IVORY <input type="checkbox"/> SILVER <input type="checkbox"/> TAUPE					

DRAPED TABLES – 42” HIGH <small>Draped tables include white vinyl top and pleated skirt on three sides. Fourth side can be draped as an addition.</small>					
ITEM #	QTY	DESCRIPTION	PRE-SHOW	AFTER DEADLINE	TOTAL
208		4'L x 24"W x42"H	\$ 128.00	\$ 192.00	\$
209		6'L x 24"W x42"H	\$ 150.00	\$ 225.00	\$
210		8'L x 24"W x42"H	\$ 170.00	\$ 255.00	\$
211		4 <sup>th</sup> Side Draped	\$ 50.00	\$ 75.00	\$
<input type="checkbox"/> RED <input type="checkbox"/> BLUE <input type="checkbox"/> GOLD <input type="checkbox"/> WHITE <input type="checkbox"/> BLACK <input type="checkbox"/> TEAL <input type="checkbox"/> GREEN <input type="checkbox"/> PURPLE <input type="checkbox"/> BURGUNDY <b>Select Colour</b> <input type="checkbox"/> IVORY <input type="checkbox"/> SILVER					

UNDRAPED TABLES - 30” HIGH <small>Undraped tables include white vinyl top.</small>					
ITEM #	QTY	DESCRIPTION	PRE-SHOW	AFTER DEADLINE	TOTAL
205		4'L x 24"W x30"H	\$ 67.00	\$ 101.00	\$
206		6'L x 24"W x30"H	\$ 81.00	\$ 122.00	\$
207		8'L x 24"W x30"H	\$ 97.00	\$ 146.00	\$

UNDRAPED TABLES - 42” HIGH <small>Undraped tables include white vinyl top.</small>					
ITEM #	QTY	DESCRIPTION	PRE-SHOW	AFTER DEADLINE	TOTAL
212		4'L x 24"W x42"H	\$ 89.00	\$ 134.00	\$
213		6'L x 24"W x42"H	\$ 103.00	\$ 155.00	\$
214		8'L x 24"W x42"H	\$ 119.00	\$ 179.00	\$

DRAPERY					
QTY	DESCRIPTION	PRE-SHOW	AFTER DEADLINE	TOTAL	
	3' High Drapery	\$ 14.00 /Lin Ft	\$ 21.00 /Lin Ft	\$	
	8' High Drapery	\$ 16.00 /Lin Ft	\$ 24.00 /Lin Ft	\$	
	12' High Drapery	\$ 19.00 /Lin Ft	\$ 29.00 /Lin Ft	\$	
<input type="checkbox"/> RED <input type="checkbox"/> BLUE <input type="checkbox"/> GOLD <input type="checkbox"/> WHITE <input type="checkbox"/> BLACK <input type="checkbox"/> TEAL <input type="checkbox"/> GREEN <input type="checkbox"/> PURPLE <input type="checkbox"/> BURGUNDY <b>Select Colour</b> <input type="checkbox"/> IVORY <input type="checkbox"/> SILVER <input type="checkbox"/> BEIGE					

PAYMENT <small>***Pre-show prices are only applicable if payment is received prior to deadline date***</small>	
--	--

Note: You must complete a credit card authorization form if you are paying by cheque		<b>SUB TOTAL</b>			
<input type="checkbox"/> VISA <input type="checkbox"/> MC <input type="checkbox"/> AMEX <input type="checkbox"/> CHQ		<b>13% HST</b>			
<table style="width: 100%; border-collapse: collapse;"> <tr> <td style="width: 50%; border-bottom: 1px solid black;"> </td> <td style="width: 50%; border-bottom: 1px solid black;"> </td> </tr> </table>				<b>TOTAL</b>	
CARD NUMBER	EXPIRY DATE	HST# R129612164			
I have read and understand the Terms & Conditions of my agreement with Stronco					
CARD HOLDER	SIGNATURE	DATE			

<b>TERMS &amp; CONDITIONS</b> • All orders must be paid in full 7 days prior to show set-up. • All prices are for the duration of the show, unless otherwise stated. • No cheques will be accepted on-site. • All orders received after the deadline date will be processed at the stated "After Deadline Date" price and are subject to availability. <b>Pre-show prices are only applicable if payment is received prior to deadline date.</b> • If no Deadline Date is specified, orders must be received 14 days before show set-up to receive Pre-Show Pricing.	• Refunds will not be given on orders cancelled on-site. • A 70% refund will be allowed on all written cancellations received 7 days prior to set-up, excluding display rentals and signage. • All claims/discrepancies must be settled prior to show closing. • If no colour is indicated, Stronco will make the selection on your behalf. • Stronco will not be responsible for any materials or products left in exhibits, counters, storage units or showcases.
---	---

J51361  
07-12-19+17-50-T3+05



# Counters, Storage & Display Units

## Counters



**603** Counter Storage Unit, white  
42" H x 42" W x 18" D



**803** Counter Storage Unit  
41" H x 41" W x 20" D

Colours available:



**804** Curved Storage Counter  
41" H x 60" W (approx.)

Colours available:



**801** U-Shaped Counter, open back  
41" H

Colours available:



## Computer Stands

## Bag Stand Holder

## Glass Showcases



**601** Computer Stand  
41" H



**701** Bag Stand Holder



**SH-C1** Glass Display Case  
(1/3 view)  
48" W x 24" D x 36" H



**SH-C2** Glass Display Case  
(Full view)  
48" W x 24" D x 36" H



**SH-F1** Tower Showcase  
with 3 glass shelves  
40" W x 16" D x 79" H

## Display Units



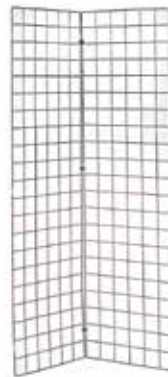
**702** Slatwall Shelving Unit  
8' H x 40" W

Colours available:



**704** Pegboard Shelving Unit  
8' H x 40" W

Holes are 1/4" diameter.  
3 shelves included.  
Hardware not included.



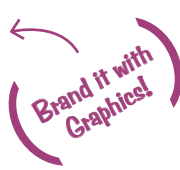
**703** Grid Panels\*  
2' x 7'-4" square grid

\*Sold as individual panels.  
Can be attached together  
in many configurations.



**802** 20" Square Pedestal  
36" H

Colours available:



# Counters, Storage & Display Units Order Form

SHOW	FOOT & ANKLE SYMPOSIUM	DEADLINE DATE	March 9, 2022
LOCATION	Metro Toronto Convention Centre	SHOW DATES	April 1 – 2, 2022

COMPANY				BOOTH #	
ADDRESS					
CITY		PROV / STATE		POSTAL / ZIP	
CONTACT		TITLE		EMAIL	
TEL		EXT		FAX	

## COUNTERS

ITEM #	QTY	DESCRIPTION	PRE-SHOW	AFTER DEADLINE	TOTAL
603		Counter Storage Unit – 42"Hx42"Wx18"D, White only	\$ 201.00	\$ 302.00	\$
803		Counter Storage Unit – 41"Hx41"Wx20"D <input type="checkbox"/> Red <input type="checkbox"/> Blue <input type="checkbox"/> Grey <input type="checkbox"/> Black	\$ 264.00	\$ 396.00	\$
804		Curved Storage Counter – 41"Hx60" <input type="checkbox"/> Red <input type="checkbox"/> Blue <input type="checkbox"/> Grey <input type="checkbox"/> Black <input type="checkbox"/> White	\$ 386.00	\$ 579.00	\$
801		U-Shaped Counter, open back – 41"H <input type="checkbox"/> Red <input type="checkbox"/> Blue <input type="checkbox"/> Grey <input type="checkbox"/> Black <input type="checkbox"/> White	\$ 523.00	\$ 785.00	\$

## COMPUTER & BAG STANDS

ITEM #	QTY	DESCRIPTION	PRE-SHOW	AFTER DEADLINE	TOTAL
601		Computer Stand – 41"H	\$ 185.00	\$ 278.00	\$
701		Bag Stand Holder	\$ 159.00	\$ 239.00	\$

## GLASS SHOWCASES

ITEM #	QTY	DESCRIPTION	PRE-SHOW	AFTER DEADLINE	TOTAL
SH-C1		Glass Display Case (1/3 view)	\$ 440.00	\$ 660.00	\$
SH-C2		Glass Display Case (full view)	\$ 487.00	\$ 731.00	\$
SH-F1		Tower Showcase	\$ 502.00	\$ 753.00	\$

## DISPLAY UNITS

ITEM #	QTY	DESCRIPTION	PRE-SHOW	AFTER DEADLINE	TOTAL
702		Slatwall Shelving Unit - 8'Hx40"W <input type="checkbox"/> Black <input type="checkbox"/> Grey <input type="checkbox"/> White <input type="checkbox"/> Maple	\$ 446.00	\$ 669.00	\$
704		Pegboard Shelving Unit – 8'Hx40"W	\$ 427.00	\$ 641.00	\$
703		Grid Panels – 2'x7' (4" square grid)	\$ 109.00	\$ 164.00	\$
802		20" Square Pedestal – 36"H <input type="checkbox"/> Black <input type="checkbox"/> Grey <input type="checkbox"/> White <input type="checkbox"/> Blue <input type="checkbox"/> Red	\$ 178.00	\$ 267.00	\$

## PAYMENT \*\*\*Pre-show prices are only applicable if payment is received prior to deadline date\*\*\*

Note: You must complete a credit card authorization form if you are paying by cheque.

VISA  MC  AMEX  CHQ

	<b>SUB TOTAL</b>	
	<b>13% HST</b>	
	<b>TOTAL</b>	

CARD NUMBER \_\_\_\_\_ EXPIRY DATE \_\_\_\_\_

I have read and understand the Terms & Conditions of my agreement with Stronco. HST# R129612164

CARD HOLDER \_\_\_\_\_ SIGNATURE \_\_\_\_\_ DATE \_\_\_\_\_

**TERMS & CONDITIONS**

- All orders must be paid in full 7 days prior to show set-up.
- All prices are for the duration of the show, unless otherwise stated.
- No cheques will be accepted on-site.
- All orders received after the deadline date will be processed at the stated "After Deadline Date" price and are subject to availability. **Pre-show prices are only applicable if payment is received prior to deadline date.**
- If no Deadline Date is specified, orders must be received 14 days before show set-up to receive Pre-Show Pricing.
- Refunds will not be given on orders cancelled on-site.
- A 70% refund will be allowed on all written cancellations received 7 days prior to set-up, excluding display rentals and signage.
- All claims/discrepancies must be settled prior to show closing.
- If no colour is indicated, Stronco reserves the right to make the selection on your behalf.
- Stronco will not be responsible for any materials or products left in exhibits, counters, storage units or showcases.

J51361  
07-12-19+17-50-T3+05

# Accessories & Office Furnishings

## Accessories



301 Easel



302 Sign Holder,  
holds 22" x 28" sign



303 Draw Drum, clear acrylic



501 Acrylic Ballot Box  
21" square x 36" H

Brand it with  
Graphics!



309 Disposable  
Wastebasket



C-BA-1 Bar Fridge



C-BA-7 Lit Stand, Chrome frame  
Double sided



124 Coat Tree, chrome



113 Garment Rack, rolling



114 Garment Rack,  
stationary



123 Retractable Stanchion  
with black strap

## Office Furniture



C-OF-1 Desk  
30" x 60"



C-OF-5 Bookshelf  
72" H



C-OF-12 Meeting Table  
42" round, black top

# Accessories & Office Furnishings Order Form

<b>SHOW</b>	<b>FOOT &amp; ANKLE SYMPOSIUM</b>	<b>DEADLINE DATE</b>	<b>March 9, 2022</b>
<b>LOCATION</b>	Metro Toronto Convention Centre	<b>SHOW DATES</b>	April 1 – 2, 2022

<b>COMPANY</b>				<b>BOOTH #</b>		
<b>ADDRESS</b>						
<b>CITY</b>		<b>PROV / STATE</b>		<b>POSTAL/ ZIP</b>		
<b>CONTACT</b>		<b>TITLE</b>		<b>EMAIL</b>		
<b>TEL</b>		<b>EXT</b>		<b>FAX</b>		

## ACCESSORIES

ITEM #	QTY	DESCRIPTION	PRE-SHOW	AFTER DEADLINE	TOTAL
301		Easel	\$ 58.00	\$ 87.00	\$
302		Sign Holder	\$ 83.00	\$ 125.00	\$
303		Draw Drum, clear acrylic	\$ 109.00	\$ 164.00	\$
501		Acrylic Ballot Box – 21" square x 36"H	\$ 170.00	\$ 255.00	\$
309		Wastebasket	\$ 19.00	\$ 29.00	\$
C-BA-1		Bar Fridge	\$ 248.00	\$ 372.00	\$
C-BA-7		Lit Stand - double-sided with 8 pockets	\$ 208.00	\$ 312.00	\$
124		Coat Tree	\$ 48.00	\$ 72.00	\$
113		Garment Rack, rolling	\$ 96.00	\$ 144.00	\$
114		Garment Rack, stationary	\$ 96.00	\$ 144.00	\$
123		Retractable Stanchion, with black strap	\$ 80.00	\$ 120.00	\$

## OFFICE FURNITURE

ITEM #	QTY	DESCRIPTION	PRE-SHOW	AFTER DEADLINE	TOTAL
C-OF-1		Desk – 30"x60"	\$ 177.00	\$ 266.00	\$
C-OF-5		Bookshelf – 72"H	\$ 167.00	\$ 251.00	\$
C-OF-12		Meeting Table – 42" round, black top	\$ 199.00	\$ 299.00	\$

## PAYMENT \*\*\*Pre-show prices are only applicable if payment is received prior to deadline date\*\*\*

<p>Note: You must complete a credit card authorization form if you are paying by cheque</p> <p><input type="checkbox"/> VISA    <input type="checkbox"/> MC    <input type="checkbox"/> AMEX    <input type="checkbox"/> CHQ</p>			<table border="1"> <tr> <td><b>SUB TOTAL</b></td> <td></td> </tr> <tr> <td><b>13% HST</b></td> <td></td> </tr> <tr> <td><b>TOTAL</b></td> <td></td> </tr> </table>		<b>SUB TOTAL</b>		<b>13% HST</b>		<b>TOTAL</b>	
<b>SUB TOTAL</b>										
<b>13% HST</b>										
<b>TOTAL</b>										
<p>_____</p> <p>CARD NUMBER</p>		<p>_____</p> <p>EXPIRY DATE</p>								
<p>I have read and understand the Terms &amp; Conditions of my agreement with Stronco</p>										
<p>_____</p> <p>CARD HOLDER</p>		<p>_____</p> <p>SIGNATURE</p>								
		<p>_____</p> <p>DATE</p>								
<p><b>TERMS &amp; CONDITIONS</b></p> <ul style="list-style-type: none"> <li>• All orders must be paid in full 7 days prior to show set-up.</li> <li>• All prices are for the duration of the show, unless otherwise stated.</li> <li>• No cheques will be accepted on-site.</li> <li>• All orders received after the deadline date will be processed at the stated "After Deadline Date" price and are subject to availability. Pre-show prices are only applicable if payment is received prior to deadline date.</li> <li>• If no Deadline Date is specified, orders must be received 14 days before show set-up to receive Pre-Show Pricing.</li> </ul>										
<ul style="list-style-type: none"> <li>• Refunds will not be given on orders cancelled on-site.</li> <li>• A 70% refund will be allowed on all written cancellations received 7 days prior to set-up, excluding display rentals and signage.</li> <li>• All claims/discrepancies must be settled prior to show closing.</li> <li>• If no colour is indicated, Stronco will make the selection on your behalf.</li> <li>• Stronco will not be responsible for any materials or products left in exhibits, counters, storage units or showcases.</li> </ul>										

J51361  
07-12-19+17-50-T3+05

# Chairs & Stools

## Chairs



102 Side Chair, grey fabric



121 Steno Chair, grey fabric



C-OF-11 Ripple Back, Black Leather Executive Meeting Chair



C-OF-13 Ripple Back, Black Leather Sled Base Meeting Chair



112 Executive Chair, black leather



103 Executive Chair, black fabric



C-OF-16 Steno Chair, black fabric

## Stools



Colours available:  
● ●

115 Drafting Stool, grey fabric



106 Counter Stool, grey



117 Fan Back Stool, black leather



110 Banana Stool, black leather



118 Wire Back Stool, grey fabric

116 Drafting Stool, black fabric

109 Fan Back Stool, black fabric



Colours available:  
● ●

C-BS-6 Black Leather Bar Stool



Colours available:  
● ●

C-BS-1 Chrome Frame Bar Stool, grey seat



Colours available:  
● ● ●

C-BS-2 Square Bar Stool, white seat, chrome legs



C-BS-11 Hannah Bar Stool, white seat

C-BS-7 White Leather Bar Stool

C-BS-19 Chrome Frame Bar Stool, white seat

C-BS-3 Square Bar Stool, black seat, chrome legs

C-BS-20 Chrome Frame Bar Stool, black seat

C-BS-18 Square Bar Stool, red seat, chrome legs

# Chairs & Stools Order Form

<b>SHOW</b>	<b>FOOT &amp; ANKLE SYMPOSIUM</b>	<b>DEADLINE DATE</b>	<b>March 9, 2022</b>
<b>LOCATION</b>	Metro Toronto Convention Centre	<b>SHOW DATES</b>	April 1 – 2, 2022

<b>COMPANY</b>				<b>BOOTH #</b>	
<b>ADDRESS</b>					
<b>CITY</b>		<b>PROV / STATE</b>		<b>POSTAL/ ZIP</b>	
<b>CONTACT</b>		<b>TITLE</b>		<b>EMAIL</b>	
<b>TEL</b>		<b>EXT</b>		<b>FAX</b>	

## CHAIRS

ITEM #	QTY	DESCRIPTION	PRE-SHOW	AFTER DEADLINE	TOTAL
102		Side Chair, Grey Fabric	\$ 79.00	\$ 119.00	\$
121		Steno Chair, Grey Fabric	\$ 89.00	\$ 134.00	\$
C-OF-11		Ripple Back Leather Executive Meeting Chair	\$ 153.00	\$ 230.00	\$
C-OF-13		Ripple Back Leather Sled Base Meeting Chair	\$ 139.00	\$ 209.00	\$
112		Executive Chair, Black Leather	\$ 122.00	\$ 183.00	\$
103		Executive Chair, Black Fabric	\$ 111.00	\$ 167.00	\$
C-OF-16		Steno Chair, Black Fabric	\$ 104.00	\$ 156.00	\$

## STOOLS

ITEM #	QTY	DESCRIPTION	PRE-SHOW	AFTER DEADLINE	TOTAL
115		Drafting Stool, Grey Fabric	\$ 108.00	\$ 162.00	\$
116		Drafting Stool, Black Fabric	\$ 108.00	\$ 162.00	\$
106		Counter Stool, Grey	\$ 124.00	\$ 186.00	\$
117		Fan Back Stool, Black Leather	\$ 124.00	\$ 186.00	\$
109		Fan Back Stool, Black Fabric	\$ 108.00	\$ 162.00	\$
110		Banana Stool, Black Leather	\$ 124.00	\$ 186.00	\$
118		Wire Back Stool, Grey Fabric	\$ 108.00	\$ 162.00	\$
C-BS-6		Black Leather Bar Stool	\$ 136.00	\$ 204.00	\$
C-BS-7		White Leather Bar Stool	\$ 136.00	\$ 204.00	\$
C-BS-1		Chrome Frame Bar Stool - Grey Seat	\$ 141.00	\$ 212.00	\$
C-BS-19		Chrome Frame Bar Stool - White Seat	\$ 141.00	\$ 212.00	\$
C-BS-20		Chrome Frame Bar Stool - Black Seat	\$ 141.00	\$ 212.00	\$
C-BS-2		Chrome Square Bar Stool – White Seat	\$ 136.00	\$ 204.00	\$
C-BS-3		Chrome Square Bar Stool – Black Seat	\$ 136.00	\$ 204.00	\$
C-BS-18		Chrome Square Bar Stool – Red Seat	\$ 136.00	\$ 204.00	\$
C-BS-11		Hannah Bar Stool – White Seat	\$ 141.00	\$ 212.00	\$

## PAYMENT \*\*\*Pre-show prices are only applicable if payment is received prior to deadline date\*\*\*

Note: You must complete a credit card authorization form if you are paying by cheque

VISA    MC    AMEX    CHQ

		<b>SUB TOTAL</b>	
		<b>13% HST</b>	
		<b>TOTAL</b>	

CARD NUMBER \_\_\_\_\_ EXPIRY DATE \_\_\_\_\_

I have read and understand the Terms & Conditions of my agreement with Stronco \_\_\_\_\_ HST# R129612164

CARD HOLDER \_\_\_\_\_ SIGNATURE \_\_\_\_\_ DATE \_\_\_\_\_

**TERMS & CONDITIONS**

- All orders must be paid in full 7 days prior to show set-up.
- All prices are for the duration of the show, unless otherwise stated.
- No cheques will be accepted on-site.
- All orders received after the deadline date will be processed at the stated "After Deadline Date" price and are subject to availability. Pre-show prices are only applicable if payment is received prior to deadline date.
- If no Deadline Date is specified, orders must be received 14 days before show set-up to receive Pre-Show Pricing.
- Refunds will not be given on orders cancelled on-site.
- A 70% refund will be allowed on all written cancellations received 7 days prior to set-up, excluding display rentals and signage.
- All claims/discrepancies must be settled prior to show closing.
- If no colour is indicated, Stronco will make the selection on your behalf.
- Stronco will not be responsible for any materials or products left in exhibits, counters, storage units or showcases.

J51361  
07-12-19+17-50-T3+05



# Tables (BISTRO, PEDESTAL & COFFEE TABLES)

## Bistro Tables



111 Bistro Table, black  
30" diameter



C-CRU-1 Bistro Table, black top,  
aluminum base  
30" diameter



C-CRU-10 Round Brushed Aluminum  
Table, laminate top  
30" diameter



C-CRU-3 Chrome Table,  
white plexi top  
24" x 24" sq.

## Pedestal Tables



104 Round White Ped Table  
30" H



105 Round White Ped Table  
18" H



119 Round Ped Table,  
grey top, chrome stand  
30" H



120 Round Ped Table,  
grey top, chrome stand  
18" H

## Coffee & End Tables



C-CT-4 Black Glass Coffee Table,  
steel frame  
24" x 48"



Colours available:



C-CT-5 Round Chrome Coffee Table,  
white plexi top  
39" x 15"H

C-CT-6 Round Chrome Coffee Table,  
black plexi top  
39" x 15"H

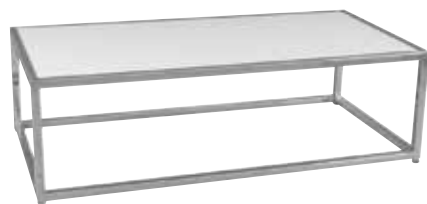


Colours available:



C-ET-11 Round Chrome End Table,  
white plexi top  
24" x 18"

C-ET-12 Round Chrome End Table,  
black plexi top  
24" x 18"



C-CT-11 Chrome Coffee Table,  
white plexi  
24" x 48"



C-ET-5 Black Glass End Table,  
steel frame  
24" x 24"



C-ET-10 Chrome End Table, square,  
white plexi  
18" x 18"





# Sofas & Chairs

## Stronco Line



**C-SS-48** Stronco Open Back Sofa, black (3 seater)

**C-SS-49** Stronco Open Back Sofa, black (2 seater)

**C-SS-50** Stronco Open Back Single Chair, black



**C-SS-51** Stronco Open Back Sofa, white (3 seater)

**C-SS-52** Stronco Open Back Sofa, white (2 seater)

**C-SS-53** Stronco Open Back Single Chair, white



**C-SS-54** Stronco Open Back Sofa, sand (3 seater)

**C-SS-55** Stronco Open Back Sofa, sand (2 seater)

**C-SS-56** Stronco Open Back Single Chair, sand

## Barcelona Line



**C-SS-24** Barcelona Black Sofa (3 seater)

**C-SS-25** Barcelona Black Sofa (2 seater)

**C-SS-26** Barcelona Black Single Chair



**C-SS-28** Barcelona White Sofa (3 seater)

**C-SS-29** Barcelona White Sofa (2 seater)

**C-SS-30** Barcelona White Single Chair



**C-SS-32** Barcelona Red Sofa (3 seater)

**C-SS-33** Barcelona Red Sofa (2 seater)

**C-SS-34** Barcelona Red Single Chair



**C-SS-27** Barcelona Black Foot Stool

**C-SS-31** Barcelona White Foot Stool

**C-SS-35** Barcelona Red Foot Stool

## Square Line



**C-SS-66** Square, L-shaped Back Single Chair, black

**C-SS-69** Square, L-shaped Back Single Chair, white



**C-SS-67** Square Back, Single Chair, black

**C-SS-70** Square Back, Single Chair, white



**C-SS-68** Square, No Back Ottoman, black

**C-SS-71** Square, No Back Ottoman, white



**C-SS-8** Black Leather Round Back Tub Chair

**C-SS-74** White Leather Round Back Tub Chair

Colours available:



Colours available:



Colours available:



Colours available:



# Sofas & Chairs Order Form

SHOW	FOOT & ANKLE SYMPOSIUM	DEADLINE DATE	March 9, 2022
LOCATION	Metro Toronto Convention Centre	SHOW DATES	April 1 – 2, 2022

COMPANY				BOOTH #	
ADDRESS					
CITY		PROV / STATE		POSTAL / ZIP	
CONTACT		TITLE		EMAIL	
TEL		EXT		FAX	

## STRONCO LINE

ITEM #	QTY	DESCRIPTION	PRE-SHOW	AFTER DEADLINE	TOTAL
C-SS-48		Stronco open back sofa, 3 seater, black	\$ 517.00	\$ 776.00	\$
C-SS-51		Stronco open back sofa, 3 seater, white	\$ 517.00	\$ 776.00	\$
C-SS-54		Stronco open back sofa, 3 seater, sand	\$ 517.00	\$ 776.00	\$
C-SS-49		Stronco open back love seat, 2 seater, black	\$ 376.00	\$ 564.00	\$
C-SS-52		Stronco open back love seat, 2 seater, white	\$ 376.00	\$ 564.00	\$
C-SS-55		Stronco open back love seat, 2 seater, sand	\$ 376.00	\$ 564.00	\$
C-SS-50		Stronco open back single chair, black	\$ 281.00	\$ 422.00	\$
C-SS-53		Stronco open back single chair, white	\$ 281.00	\$ 422.00	\$
C-SS-56		Stronco open back single chair, sand	\$ 281.00	\$ 422.00	\$

## BARCELONA LINE

C-SS-24		Barcelona black sofa, 3 seater	\$ 517.00	\$ 776.00	\$
C-SS-28		Barcelona white sofa, 3 seater	\$ 517.00	\$ 776.00	\$
C-SS-32		Barcelona red sofa, 3 seater	\$ 517.00	\$ 776.00	\$
C-SS-25		Barcelona black sofa, 2 seater	\$ 376.00	\$ 564.00	\$
C-SS-29		Barcelona white sofa, 2 seater	\$ 376.00	\$ 564.00	\$
C-SS-33		Barcelona red sofa, 2 seater	\$ 376.00	\$ 564.00	\$
C-SS-26		Barcelona black single chair	\$ 281.00	\$ 422.00	\$
C-SS-30		Barcelona white single chair	\$ 281.00	\$ 422.00	\$
C-SS-34		Barcelona red single chair	\$ 281.00	\$ 422.00	\$
C-SS-27		Barcelona black foot stool	\$ 185.00	\$ 278.00	\$
C-SS-31		Barcelona white foot stool	\$ 185.00	\$ 278.00	\$
C-SS-35		Barcelona red foot stool	\$ 185.00	\$ 278.00	\$

## SQUARE LINE

C-SS-66		Square, L-shaped back single chair, black	\$ 171.00	\$ 257.00	\$
C-SS-69		Square, L-shaped back single chair, white	\$ 171.00	\$ 257.00	\$
C-SS-67		Square back single chair, black	\$ 159.00	\$ 239.00	\$
C-SS-70		Square back single chair, white	\$ 159.00	\$ 239.00	\$
C-SS-68		Square, no back ottoman, black	\$ 141.00	\$ 212.00	\$
C-SS-71		Square, no back ottoman, white	\$ 141.00	\$ 212.00	\$

## ROUND BACK TUB CHAIRS

C-SS-8		Black leather round back tub Chair	\$ 188.00	\$ 282.00	\$
C-SS-74		White leather round back tub Chair	\$ 188.00	\$ 282.00	\$

## PAYMENT \*\*\*Pre-show prices are only applicable if payment is received prior to deadline date\*\*\*

Note: You must complete a credit card authorization form if you are paying by cheque

VISA    MC    AMEX    CHQ

	<b>SUB TOTAL</b>	
	<b>13% HST</b>	
	<b>TOTAL</b>	

CARD NUMBER \_\_\_\_\_ EXPIRY DATE \_\_\_\_\_

I have read and understand the Terms & Conditions of my agreement with Stronco HST# R129612164

CARD HOLDER \_\_\_\_\_ SIGNATURE \_\_\_\_\_ DATE \_\_\_\_\_

<b>TERMS &amp; CONDITIONS</b> <ul style="list-style-type: none"> <li>All orders must be paid in full 7 days prior to show set-up.</li> <li>All prices are for the duration of the show, unless otherwise stated.</li> <li>No cheques will be accepted on-site.</li> <li>All orders received after the deadline date will be processed at the stated "After Deadline Date" price and are subject to availability. <b>Pre-show prices are only applicable if payment is received prior to deadline date.</b></li> <li>If no Deadline Date is specified, orders must be received 14 days before show set-up to receive Pre-Show Pricing.</li> </ul>	<ul style="list-style-type: none"> <li>Refunds will not be given on orders cancelled on-site.</li> <li>A 70% refund will be allowed on all written cancellations received 7 days prior to set-up, excluding display rentals and signage.</li> <li>All claims/discrepancies must be settled prior to show closing.</li> <li>If no colour is indicated, Stronco will make the selection on your behalf.</li> <li>Stronco will not be responsible for any materials or products left in exhibits, counters, storage units or showcases.</li> </ul>
--	---

J51361  
07-12-19+17-50-T3+05



# Signs & Banners Order Form

<b>SHOW</b>	<b>FOOT &amp; ANKLE SYMPOSIUM</b>			<b>DEADLINE DATE</b>	<b>March 9, 2022</b>
<b>LOCATION</b>	Metro Toronto Convention Centre			<b>SHOW DATES</b>	April 1 – 2, 2022
<b>COMPANY</b>				<b>BOOTH #</b>	
<b>ADDRESS</b>					
<b>CITY</b>		<b>PROV / STATE</b>		<b>POSTAL / ZIP</b>	
<b>CONTACT</b>		<b>TITLE</b>		<b>EMAIL</b>	
<b>TEL</b>		<b>EXT</b>		<b>FAX</b>	

**All prices are based on client supplied artwork (see submission guidelines)  
All orders must be pre-paid in full. Orders cannot be processed until payment is received.**

<b>SIGNS (Single-Sided)</b>									
<b>FOAMCORE (suitable for one time use)</b>					<b>PVC (suitable for multiple use)</b>				
QTY	DESCRIPTION	PRE-SHOW	AFTER DEADLINE	TOTAL	QTY	DESCRIPTION	PRE-SHOW	AFTER DEADLINE	TOTAL
	8" x 44"	\$ 65.00	\$ 98.00	\$		8" x 44"	\$ 80.00	\$ 120.00	\$
	14" x 22"	\$ 72.00	\$ 108.00	\$		14" x 22"	\$ 90.00	\$ 135.00	\$
	22" x 28"	\$ 96.00	\$ 144.00	\$		22" x 28"	\$ 119.00	\$ 179.00	\$
	24" x 32"	\$ 112.00	\$ 168.00	\$		24" x 32"	\$ 139.00	\$ 209.00	\$
	36" x 48"	\$ 208.00	\$ 312.00	\$		36" x 48"	\$ 260.00	\$ 390.00	\$

<b>BANNERS (Single-Sided)</b>									
QTY	DESCRIPTION	PRE-SHOW	AFTER DEADLINE	TOTAL	QTY	DESCRIPTION	PRE-SHOW	AFTER DEADLINE	TOTAL
	24"x48"	\$ 186.00	279.00	\$		36"x96"	\$ 575.00	\$ 863.00	\$
	24"x72"	\$ 278.00	417.00	\$		36"x120"	\$ 721.00	\$ 1082.00	\$
	24"x96"	\$ 367.00	551.00	\$		48"x96"	\$ 769.00	\$ 1154.00	\$
	36"x72"	\$ 416.00	624.00	\$		48"x120"	\$ 961.00	\$ 1442.00	\$

<b>OTHER SERVICES</b>					
System Time	\$ 144.00 / Hr	x	_____ Hrs	=	\$ _____
Creative Services – quoted upon request					Total

<b>LIST REQUIREMENTS HERE:</b>					

<b>PAYMENT ***Pre-show prices are only applicable if payment is received prior to deadline date***</b>											
Note: You must complete a credit card authorization form if you are paying by cheque <input type="checkbox"/> VISA <input type="checkbox"/> MC <input type="checkbox"/> AMEX <input type="checkbox"/> CHQ					<table border="1"> <tr> <td><b>SUB TOTAL</b></td> <td></td> </tr> <tr> <td><b>13% HST</b></td> <td></td> </tr> <tr> <td><b>TOTAL</b></td> <td></td> </tr> </table>	<b>SUB TOTAL</b>		<b>13% HST</b>		<b>TOTAL</b>	
<b>SUB TOTAL</b>											
<b>13% HST</b>											
<b>TOTAL</b>											
CARD NUMBER _____			EXPIRY DATE _____								
I have read and understand the Terms & Conditions of my agreement with Stronco					HST# R129612164						
CARD HOLDER _____		SIGNATURE _____		DATE _____							
<b>TERMS &amp; CONDITIONS</b> • Onsite sign orders are subject to delivery and additional price surcharges. • Artwork must be supplied by the client, as per the submission guidelines. All other formats are subject to additional system time charges by the hour. • All orders must be pre-paid in full prior to delivery. • To receive pre-show pricing, confirmed order, artwork and payment must be received prior to deadline date.			• All orders received after the deadline date will be processed at the stated "After Deadline Date" price and no guarantees can be given on production times. • No refunds will be given on signage or graphics once produced. • No cheques will be accepted on-site. • All claims/discrepancies must be settled prior to show closing. • Stronco will not be responsible for any materials or products left in exhibits, counters, storage units or showcases.								

J51361  
07-12-19+17-50-T3+05



# TRANSPORTATION SERVICES



Need to get your exhibit materials to the show? Stronco Logistics is committed to fulfilling all your trade show logistics needs and gives you reliable service and great rates on air and ground shipping.

**We offer full service Logistics solutions including:**

- All modes of transportation including land, air and sea
- Local cartage service, tailgate, driver assist
- Real time freight tracking and tracing
- Canada, U.S. and International Customs Clearances
- Temporary imports, on-site clearances, ATA carnets
- On-site representation and around the clock contact information

**FOR MORE INFORMATION CONTACT:**

**Stronco Logistics Services**

T: 905.270.6767 | [logistics@stronco.com](mailto:logistics@stronco.com) | [www.stronco.com](http://www.stronco.com)



# INTERNATIONAL & U.S. EXHIBITORS



US and International shipments entering Canada require specialized documentation. Stronco can expedite the time-consuming and confusing paperwork involved. We can handle all inbound and outbound customs documents, eliminating unnecessary and time-consuming delays at border crossings. Our partnership with Canada's leading Customs Brokers ensures your clearances are being handled by licensed professionals with years of experience and long-standing relationships with Canada Border Services Agency.

## **We offer full service Logistics solutions including:**

- All modes of transportation including land, air and sea
- Local cartage service, tailgate, driver assist
- Real time freight tracking and tracing
- Canada, U.S. and International Customs Clearances
- Temporary imports, on-site clearances, ATA carnets
- On-site representation and around the clock contact information

## **FOR MORE INFORMATION CONTACT:**

Stronco Logistics Services

T: 905.270.6767

[logistics@stronco.com](mailto:logistics@stronco.com)

[www.stronco.com](http://www.stronco.com)

# Transportation & Customs Brokerage Services

PICKUP ADDRESS			
COMPANY NAME _____			
IRS # _____			
ADDRESS _____			
ADDRESS _____			
ADDRESS _____			
CITY _____	STATE PROV _____	ZIP/ POSTAL _____	
CONTACT _____			
PHONE # _____		FAX _____	

DELIVERY ADDRESS			
COMPANY NAME _____			
SHOW NAME	FOOT & ANKLE SYMPOSIUM	BOOTH # _____	
FACILITY Metro Toronto Convention Centre			
ADDRESS _____			
ADDRESS _____			
CITY _____	STATE PROV _____	ZIP/ POSTAL _____	
ON SITE CONTACT _____			
CELL PHONE # _____			

BILL TO			
COMPANY NAME _____			
ADDRESS _____			
ADDRESS _____			
CITY _____	STATE PROV _____	ZIP/ POSTAL _____	
CONTACT _____			
PHONE # _____		FAX _____	

RETURN FREIGHT			
COMPANY NAME _____			
ADDRESS _____			
ADDRESS _____			
CITY _____	STATE PROV _____	ZIP/ POSTAL _____	
CONTACT _____			
PHONE # _____			

TERMS OF PAYMENT AND SECURITY DEPOSIT – MUST BE COMPLETED			
<input type="checkbox"/> VISA	<input type="checkbox"/> MC	<input type="checkbox"/> AMEX	<input type="checkbox"/> CORPORATE CARD
		<input type="checkbox"/> PERSONAL CARD	
_____		_____	
CARD NUMBER		EXPIRY DATE	
Card Holder _____			
Signature _____		Date _____	
I hereby authorize the use of this credit card for payment of services related to this order form. I understand that declined credit cards are subject to a 30% surcharge.			

SHIPMENT INFORMATION			
Pick Up Date _____	Time _____	Delivery Date _____	Time _____
<b>TYPE</b>	<b>PIECES</b>	<b>DIMENSIONS (Inches)</b>	<b>WEIGHT (LBS)</b>
Cartons / Boxes	_____	L _____ W _____ H _____	_____
Crates / Fiber Case	_____	L _____ W _____ H _____	_____
Skid / Pallet	_____	L _____ W _____ H _____	_____
Carpet / Other	_____	L _____ W _____ H _____	_____
<b>Total Pieces</b>		<b>Total LBS</b>	
Requested Service Level		<input type="checkbox"/> AIR	<input type="checkbox"/> 2 <sup>ND</sup> DAY
Additional Services Required		<input type="checkbox"/> LIFT GATE	<input type="checkbox"/> INSIDE PICKUP / DELIVERY

CARGO INSURANCE / DECLARED VALUE	
The declared value of carriage of this shipment is agreed to and understood to be \$0.50 per pound multiplied by the number of pounds for that part of the shipment lost or damaged but not less than \$50.00 per shipment UNLESS a value is declared below and applicable charges paid. Subject to the terms and conditions of the liability of the Forwarder for loss/damage stated below. Cargo insurance will not apply or cover any electronic goods. (Additional fees for Cargo Insurance will apply)	
Do you require additional Insurance?	<input type="checkbox"/> YES <input type="checkbox"/> NO <b>Declared Value</b> \$ _____

TERMS & CONDITIONS		
<p>This order is placed with the specific understanding that we hereby release Stronco and or agents from all liability for loss, damage and or theft to our merchandise and property, no matter how caused, and we have insured all such properties being handled. 1) Stronco shall not be responsible for damage to uncrated materials, improperly packaged or concealed damage. 2) Stronco will not be responsible for any loss/damage/delay due to fire, acts of god, strikes, lockouts of any kind beyond its control. 3) Stronco liability is outlined in the above Cargo Insurance/Declared Value section. Please ensure you are self insured or you must declare a value for carriage and pay the charges applicable for the service. 4) Stronco shall not be liable to any extent whatsoever for the actual, potential or assumed losses or profits or revenues, or for any collateral costs which may result from any loss or damaged to an exhibitors materials which make it impossible or impractical to exhibit same. 5) Each exhibitor is responsible to declare all hazardous materials and abide by all Federal, Provincial, State and local laws.</p> <p><b>I have read and agreed to the Terms and Conditions of this contract with Stronco.</b></p>		
Print Name _____	Signature/Authorization _____	Date _____

J51361  
Rev 10-12-10

